

February 5, 2008 Severe Weather Event

Muhlenberg County, KY (EF-3, 3 fatal)

PUBLIC INFORMATION STATEMENT...UPDATE
NATIONAL WEATHER SERVICE PADUCAH KY
108 PM CST FRI FEB 8 2008

...PRELIMINARY STORM DAMAGE SURVEY RESULTS FOR MUHLENBERG COUNTY
KENTUCKY FOR TUESDAY FEBRUARY 5...

THE FOLLOWING IS A PRELIMINARY DAMAGE ASSESSMENT FOR A TORNADO WHICH
BEGAN NEAR THE COMMUNITY OF GREENVILLE KENTUCKY. PLEASE NOTE THAT
THIS IS JUST A PRELIMINARY EVALUATION OF THE EVENT.

* EVENT DATE: TUESDAY, FEBRUARY 5, 2008

* EVENT TIME: 744 PM CST

* EVENT TYPE: TORNADO

* EVENT LOCATION: BEGAN APPROXIMATELY 4 MILES SOUTHWEST OF
GREENVILLE KENTUCKY AND ENDING APPROXIMATELY 2 MILES NORTH OF
MARTWICK.

* PEAK WIND: 160 MPH

* RATING: EF-3

* DAMAGE DIMENSIONS: THE TORNADO HAD AN APPROXIMATE PATH LENGTH OF
16.2 MILES AND A WIDTH AVERAGING 325 YARDS.

* INJURIES: TOTAL UNKNOWN AT THIS TIME.

* FATALITIES: 3

* DISCUSSION/DAMAGE: IN THE COMMUNITIES OF GREENVILLE AND POWDERLY
THERE WERE 113 HOMES AFFECTED. 48 HOMES WERE DESTROYED AND 32
HAVING MAJOR DAMAGE (35 TO 40 PERCENT WERE MOBILE HOMES). DAMAGE IS
STILL BEING ASSESSED IN THE COMMUNITY OF CENTRAL CITY BUT INITIAL
SURVEY IS INDICATING DOZENS OF HOMES AFFECTED BY THE TORNADO.



Photo 1: Outer walls blown off well-built home in Gas Light Park in Central City, KY



Photo 2: Demolished factory in Greenville, KY



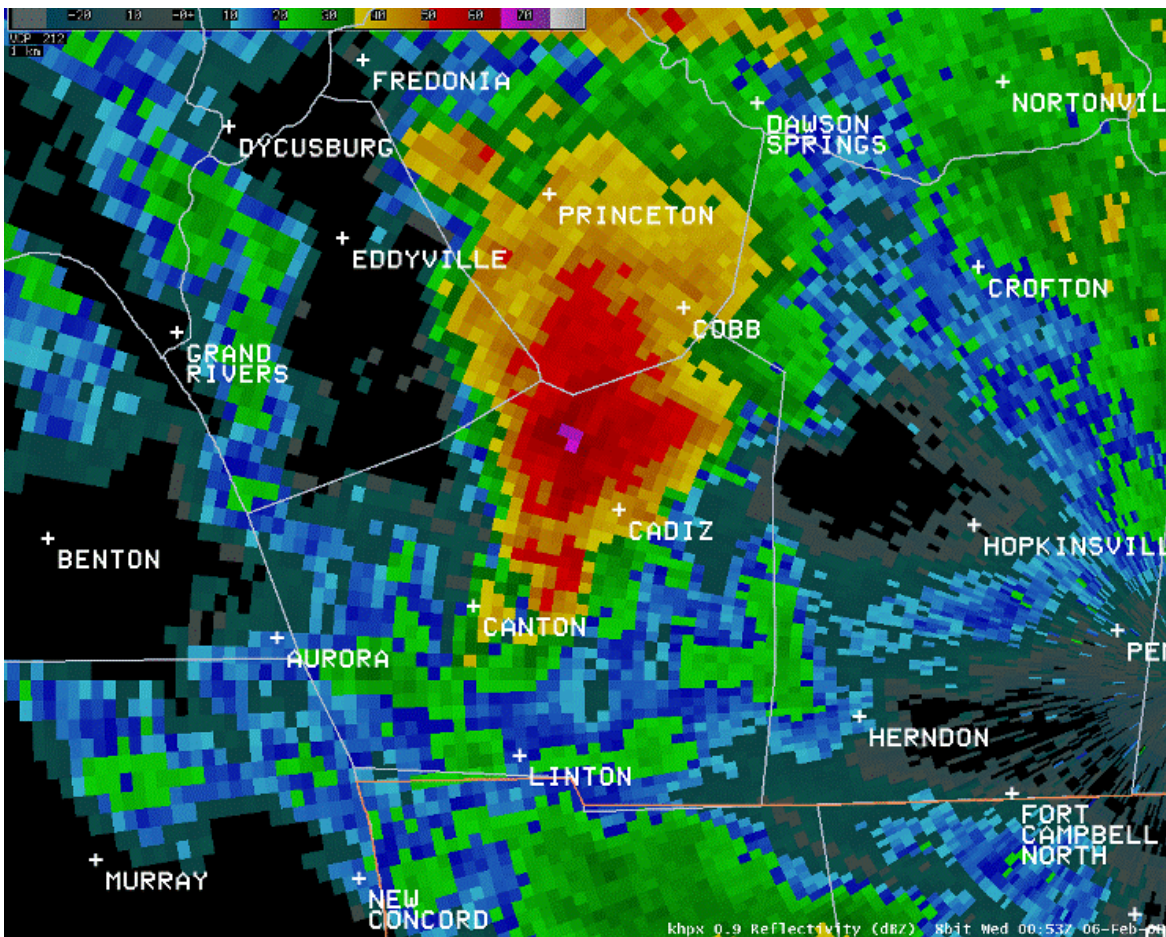
Photo 3: Car tossed off Highway 189 bypass between Central City and Powderly

Muhlenberg Co. EF-3

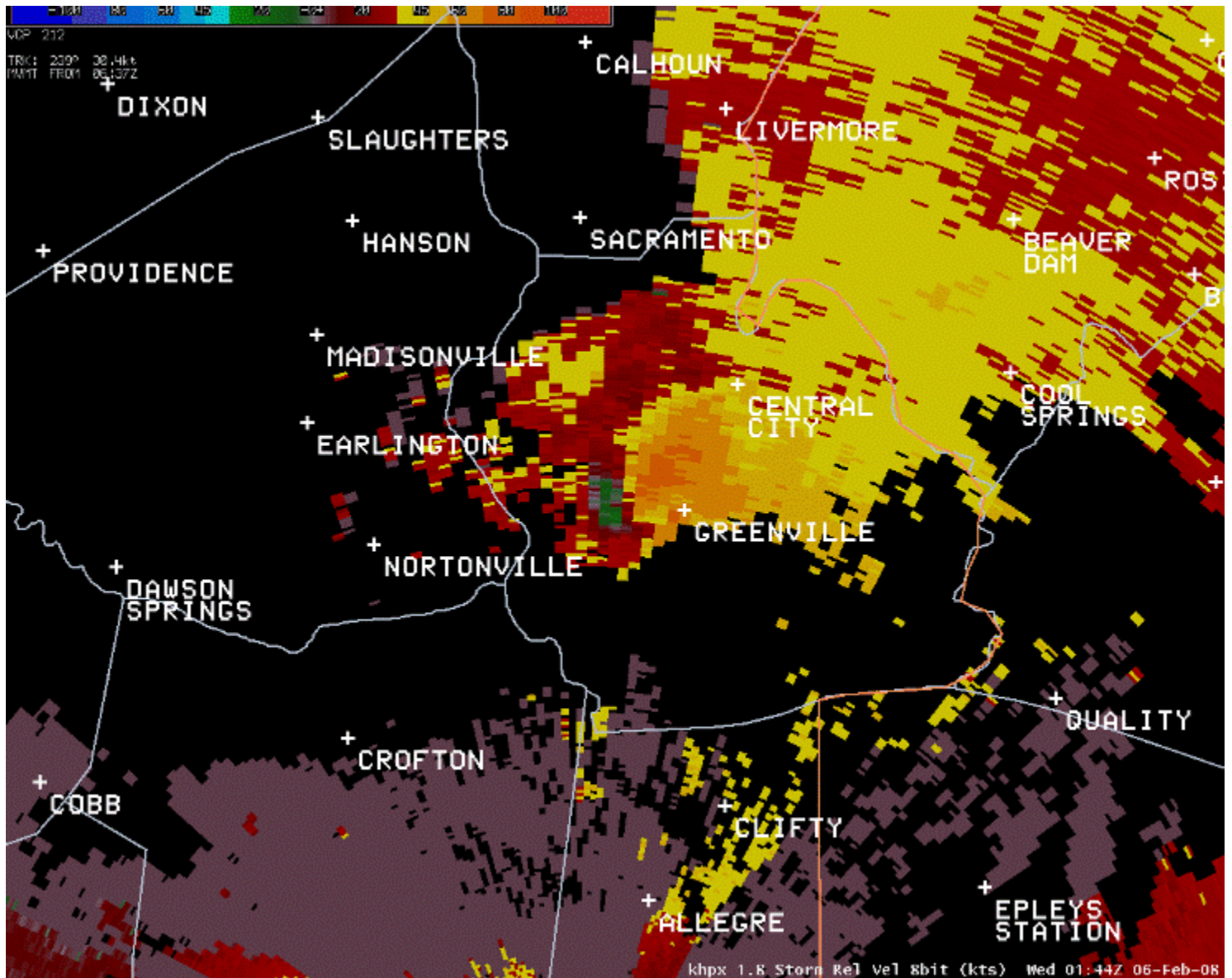


Path map of tornado

Below: radar reflectivity showing Trigg/Christian County supercell (from Fort Campbell/Hopkinsville radar)



Below: radar image of storm-relative winds for the same storm as above as it crossed Muhlenberg County. Note red/green couplet marking tornado just west of Greenville. Image from Fort Campbell/Hopkinsville radar.



Christian Co., KY

PUBLIC INFORMATION STATEMENT...CORRECTED EVENT TIME
NATIONAL WEATHER SERVICE PADUCAH KY
831 AM CST FRI FEB 8 2008

...PRELIMINARY STORM DAMAGE SURVEY RESULTS FOR CHRISTIAN COUNTY
KENTUCKY ON TUESDAY FEB 5...

THE FOLLOWING IS A PRELIMINARY DAMAGE ASSESSMENT WHICH BEGAN NEAR
THE COMMUNITY OF CERULEAN AND ENDING NEAR CROFTON KENTUCKY.

* EVENT DATE: TUESDAY, FEBRUARY 5, 2008

* EVENT TIME: 709 PM CST TO 725 PM CST (TIME ESTIMATED)

* EVENT TYPE: TORNADO

* EVENT LOCATION: BEGAN 3.5 MILES EAST OF CERULEAN, OR JUST WEST OF
THE JUNCTION OF HIGHWAYS 91 AND 624. THE TORNADO CAME TO AN END 3
MILES NORTHEAST OF CROFTON NEAR THE PENNYRILE PARKWAY.

* PEAK WIND: 130 MPH

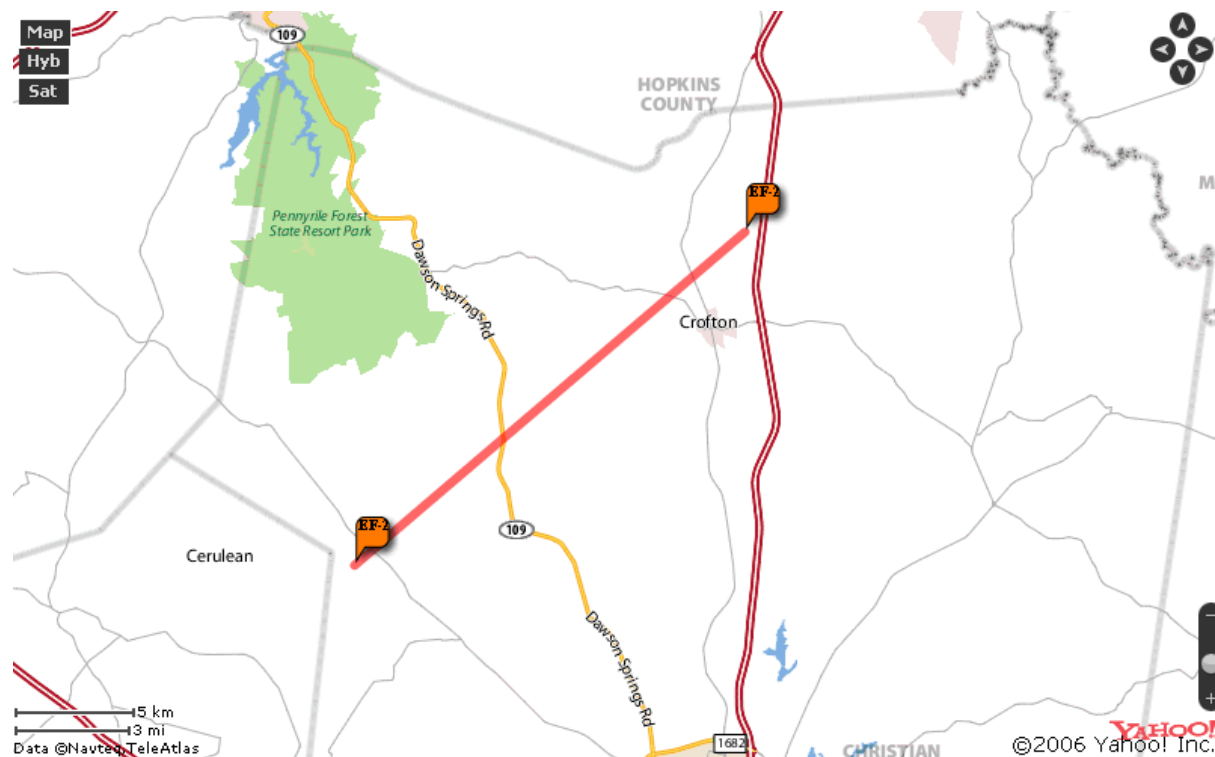
* RATING: EF-2

* DAMAGE DIMENSIONS: 13.8 MILES LONG AND AVERAGING 225 YARDS WIDE.

* INJURIES: 2 (INJURED WERE SELF-TRANSPORTED TO LOCAL HOSPITAL)

* FATALITIES: NONE

* DISCUSSION/DAMAGE: 27 HOMES DAMAGED WITH 17 DESTROYED. A TOTAL OF
19 GARAGES/SHEDS/BARNES DAMAGED OR DESTROYED.





Dawson Springs Rd



Old Palestine Church Rd.

Calloway County, KY

...DAMAGE SURVEY RESULTS FOR A PORTION OF CALLOWAY COUNTY KENTUCKY ON TUESDAY FEB 5...

THE FOLLOWING IS A FINAL DAMAGE ASSESSMENT WHICH OCCURRED NEAR POTTERTOWN AND BOATWRIGHT KENTUCKY.

* EVENT DATE: TUESDAY, FEBRUARY 5, 2008

* EVENT TIME: 625 PM CST TO 630 PM CST

* EVENT TYPE: TORNADO

* EVENT LOCATION: BEGAN APPROXIMATELY 1.8 MILES NORTHEAST OF POTTERTOWN KENTUCKY AND ENDING 1.5 MILES NORTHWEST OF BOATWRIGHT KENTUCKY.

* PEAK WIND: 94 MPH

* RATING: EF-1

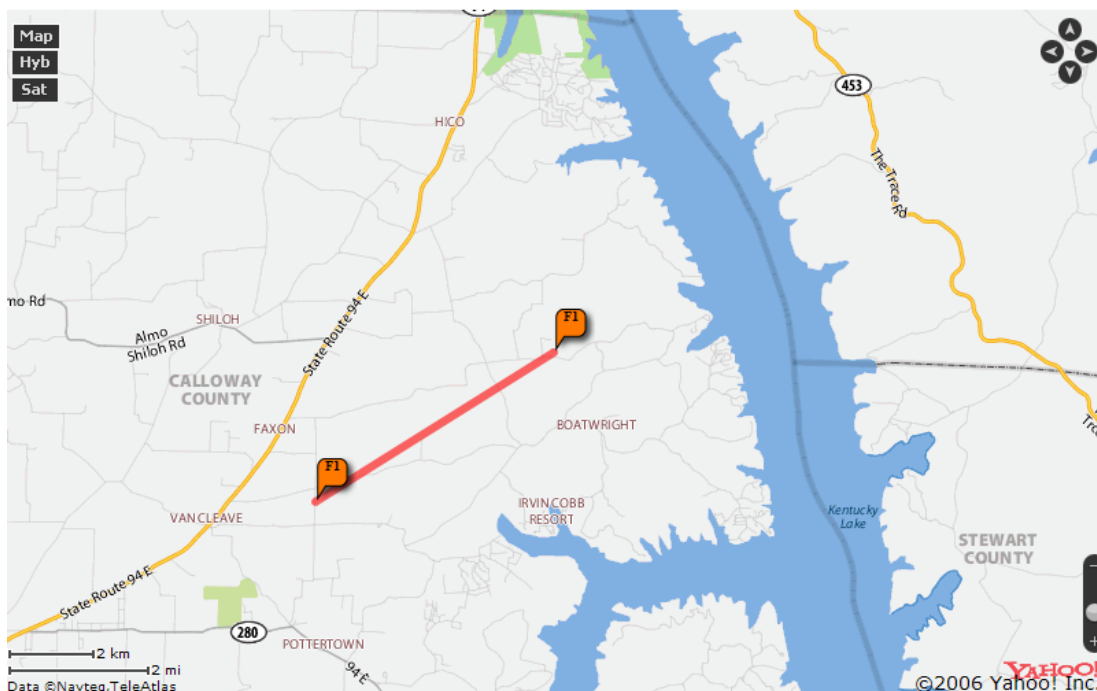
* DAMAGE DIMENSIONS: APPROXIMATELY 1.2 MILES IN LENGTH AND AVERAGING 90 YARDS WIDE...WITH MAXIMUM WIDTH 150 YARDS.

* INJURIES: NONE

* FATALITIES: NONE

* DISCUSSION/DAMAGE: ONE HOME WITH SHINGLE AND SOFFETT DAMAGE. ONE HOME WITH 2 LARGE WINDOWS BLOWN OUT WITH SIGNIFICANT INTERIOR DAMAGE. WINDS ENTERED THE ATTIC THEN BLEW OUT THE INTERIOR CEILINGS...THEN EXITED THE HOME THROUGH THE BASEMENT WINDOWS. SPORADIC TREE DAMAGE ALONG THE PATH LENGTH.

Calloway County EF-1



Trigg County, KY

...PRELIMINARY STORM DAMAGE SURVEY RESULTS FOR 2 TORNADOES IN TRIGG COUNTY KENTUCKY WHICH OCCURRED ON TUESDAY FEB 5...

THE FOLLOWING IS A PRELIMINARY DAMAGE ASSESSMENT FOR TORNADO DAMAGE AT BARKLEY SHORES...AND ALSO BETWEEN MAPLE GROVE AND CADIZ.

...TORNADO 1 (BARKLEY SHORES)...

- * EVENT DATE: TUESDAY, FEBRUARY 5, 2008
- * EVENT TIME: 640 PM CST (TIME ESTIMATED)
- * EVENT TYPE: TORNADO
- * EVENT LOCATION: BARKLEY SHORES COMMUNITY, APPROXIMATELY 3 MILES SOUTH OF CANTON
- * PEAK WIND: 87 MPH
- * RATING: EF-1
- * DAMAGE DIMENSIONS: ONE-TENTH OF A MILE LONG, AND 25 TO 50 YARDS WIDE MAXIMUM
- * INJURIES: NONE
- * FATALITIES: NONE
- * DISCUSSION/DAMAGE: TREES UPROOTED AND SNAPPED

...TORNADO 2 (BETWEEN MAPLE GROVE AND CADIZ)...

- * EVENT DATE: TUESDAY, FEBRUARY 5, 2008
- * EVENT TIME: 650 TO 700 PM CST (TIME ESTIMATED)
- * EVENT TYPE: TORNADO
- * EVENT LOCATION: 2.5 MILES NORTH OF MAPLE GROVE TO 1.8 MILES SOUTHEAST OF CADIZ
- * PEAK WIND: 105 MPH
- * RATING: EF-1
- * DAMAGE DIMENSIONS: 5.1 MILES LONG, AND 150 YARDS WIDE MAXIMUM
- * INJURIES: NONE
- * FATALITIES: NONE
- * DISCUSSION/DAMAGE: ROOF PARTIALLY BLOWN OFF OF ONE HOME, SHINGLE AND MINOR DAMAGE TO OTHER HOMES, TREES UPROOTED AND SNAPPED, BARN SHIFTED SLIGHTLY OFF OF ITS FOUNDATION

Pictures from Calloway and Trigg EF 1 tornadoes:





Ripley County, MO

...FINAL STORM DAMAGE SURVEY RESULTS FOR A PORTION OF RIPLEY COUNTY MISSOURI ON TUESDAY FEB 5...

THE FOLLOWING IS THE FINAL DAMAGE ASSESSMENT WHICH BEGAN NEAR THE COMMUNITY OF BURR AND ENDING NEAR OXLY MISSOURI.

* EVENT DATE: TUESDAY, FEBRUARY 5, 2008

* EVENT TIME: 735 PM CST TO 748 PM CST

* EVENT TYPE: TORNADO

* EVENT LOCATION: BEGAN APPROXIMATELY JUST EAST OF BURR TRACKING EAST NORTHEAST ACROSS THE SOUTHERN PORTION OF RIPLEY COUNTY.

Note: Damage path may have started in Arkansas.

* PEAK WIND: 109 MPH

* RATING: EF-1

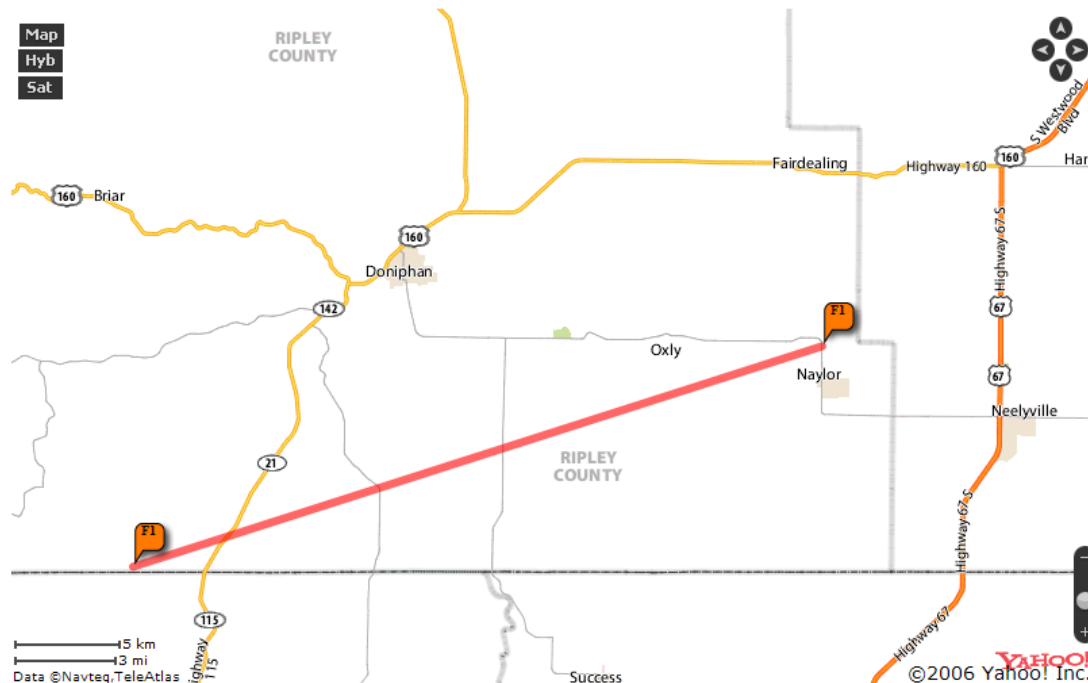
* DAMAGE DIMENSIONS: TORNADO HAD A BROKEN PATH EXTENDING JUST OVER 19 MILES, WITH A WIDTH RANGING BETWEEN 100 TO 200 YARDS.

* INJURIES: NONE

* FATALITIES: NONE

* DISCUSSION/DAMAGE: SPORADIC TREES WITH TOPS SNAPPED OFF OR UPROOTED. SEVERAL OUTBUILDINGS (MOSTLY POLE BARNS) DESTROYED. 4 TO 5 OLDER UNATTENDED MOBILE HOMES SUFFERING DAMAGE OR DESTROYED. THE LAST DAMAGE NOTED WAS AN OLD BARN KNOCKED OVER JUST SOUTHEAST OF OXLY MISSOURI.

Ripley Co. EF-1



Damage Photos, Ripley Co.









Butler Co., MO

...PRELIMINARY DAMAGE SURVEY RESULTS FOR BUTLER COUNTY MISSOURI...

THE FOLLOWING IS THE PRELIMINARY DAMAGE ASSESSMENT FOR A TORNADO IN SOUTHWEST BUTLER COUNTY. PLEASE NOTE THAT DAMAGE IN SOUTHEAST BUTLER COUNTY ASSOCIATED WITH THE SAME STORM HAS NOT YET BEEN SURVEYED.

* EVENT DATE: TUESDAY FEBRUARY 5 2008

* EVENT TIME: 803 PM CST

* EVENT TYPE: TORNADO

* EVENT LOCATION: 3.6 MILES SOUTHWEST OF HARVIELL TO 2 MILES SOUTH SOUTHEAST OF HARVIELL

* PEAK WIND: 90 MPH

* RATING: EF-1

* AVERAGE PATH WIDTH: 275 YARDS

* PATH LENGTH: 3.2 MILES

* INJURIES: NONE

* FATALITIES: NONE

* DISCUSSION/DAMAGE: LARGE TREES/LIMBS AND POWER POLES SNAPPED OFF...OLD BARN BLOWN OVER...NEWER BARN LOST PART OF ROOF AND LARGE DOOR...SOME SHINGLE DAMAGE TO HOMES...SEVERAL GRAIN BINS DENTED BY THE WIND...ONE EQUIPMENT SHED BLOWN AWAY.

Path map of Butler Co. tornado

Butler Co., MO EF-1



Butler Co., - Stoddard Co MO

THE FOLLOWING IS A PRELIMINARY DAMAGE ASSESSMENT FOR A SECOND TORNADO IN BUTLER COUNTY...EXTENDING INTO STODDARD COUNTY. PLEASE NOTE THIS DAMAGE EXTENDING FROM EASTERN BUTLER COUNTY TO SOUTHWEST STODDARD COUNTY IS ASSOCIATED WITH THE SAME STORM AS THE TORNADO IN SOUTHWEST BUTLER COUNTY.

* EVENT DATE: TUESDAY FEBRUARY 5 2008

* EVENT TIME: 815 PM CST

* EVENT TYPE: TORNADO

* EVENT LOCATION: 6.5 MILES SOUTH OF FISK IN EASTERN BUTLER COUNTY TO 3.4 MILES NORTH OF BERNIE IN SOUTHWEST STODDARD COUNTY.

* PEAK WIND: 130 MPH

* RATING: EF-2

* MAXIMUM PATH WIDTH: 200 YARDS

* PATH LENGTH: 13.6 MILES

* INJURIES: NONE

* FATALITIES: NONE

* DISCUSSION/DAMAGE: IN BUTLER COUNTY - WIDESPREAD TREE DAMAGE, MOBILE HOME DESTROYED (FRAME WAS BENT), BRICK HOUSE DAMAGED (ONLY INTERIOR WALLS STANDING), 3 EMPTY GRAIN SILOS BLOWN ABOUT 900 YARDS, ROOF DAMAGE TO SEVERAL HOMES, CONCRETE SILO DESTROYED. IN STODDARD COUNTY - SHINGLE DAMAGE TO HOMES, TOP OF METAL SILOS PUSHED INWARD, NUMEROUS POWER POLES DOWN.

Butler/Stoddard EF2



Pictures from Butler-Stoddard Tornado from NWS Survey:



Jefferson County, IL

...FINAL STORM DAMAGE SURVEY RESULTS FOR JEFFERSON COUNTY ILLINOIS
ON TUESDAY FEB 5...

THE FOLLOWING IS THE FINAL DAMAGE ASSESSMENT FOR THE BELLE RIVE AREA
OF ILLINOIS.

- * EVENT DATE: TUESDAY, FEBRUARY 5, 2008
- * EVENT TIME: 629 PM CST
- * EVENT TYPE: STRAIGHT LINE THUNDERSTORM WIND DAMAGE
- * EVENT LOCATION: BELLE RIVE ILLINOIS
- * PEAK WIND: ESTIMATED 80 TO 85 MPH
- * INJURIES: NONE
- * FATALITIES: NONE
- * DISCUSSION/DAMAGE: A DOZEN HOMES WITH ROOF DAMAGE SUCH AS TILES
MISSING OR TREES ON ROOFS. 30 TO 35 TREES DAMAGED OR UPROOTED.
NUMEROUS POWER LINES DOWN.

Southern Christian County, KY (Microburst)

...PRELIMINARY MICROBURST STORM DAMAGE SURVEY RESULTS FOR A PORTION
OF CHRISTIAN COUNTY KENTUCKY ON TUESDAY FEB 5...

THE FOLLOWING IS A PRELIMINARY DAMAGE ASSESSMENT WHICH OCCURRED NEAR
THE COMMUNITY OF OAK GROVE KENTUCKY.

- * EVENT DATE: TUESDAY, FEBRUARY 5, 2008
- * EVENT TIME: 900 PM CST (TIME ESTIMATED)
- * EVENT TYPE: MICROBURST
- * EVENT LOCATION: BEGAN 1 MILE SOUTHEAST OF OAK GROVE AND ENDING 3
MILES NORTH OF OAK GROVE.
- * PEAK WIND: 95 MPH
- * RATING: MICROBURST
- * DAMAGE DIMENSIONS: 4 MILES IN LENGTH AND 1.5 MILES WIDE.
- * INJURIES: NONE
- * FATALITIES: NONE
- * DISCUSSION/DAMAGE: SEVERAL DOZEN HOMES WITH MINOR WIND DAMAGE
(MOSTLY SHINGLES) WITH LESS THAN 10 HOMES HAVING ADDITIONAL DAMAGE.
TWO BARNs DAMAGED. DOZENS OF LARGE TREES AND SIGNS BLOWN OVER.

Carlisle County, KY (Macroburst)

...PRELIMINARY STORM DAMAGE SURVEY RESULTS FOR CARLISLE COUNTY KENTUCKY FOR TUESDAY FEBRUARY 5...

THE FOLLOWING IS A PRELIMINARY DAMAGE ASSESSMENT FOR WIND DAMAGE NEAR CUNNINGHAM KENTUCKY ALONG THE CARLISLE/GRAVES COUNTY LINE.

- * EVENT DATE: TUESDAY, FEBRUARY 5, 2008
- * EVENT TIME: 10 PM CST (ESTIMATED)
- * EVENT TYPE: STRAIGHT LINE THUNDERSTORM WIND DAMAGE DUE TO MICROBURST
- * EVENT LOCATION: 4 MILES ENE OF CUNNINGHAM NEAR THE CARLISLE/GRAVES COUNTY LINE.
- * PEAK WIND: ESTIMATED 95 MPH
- * DAMAGE DIMENSIONS: APPROXIMATELY 2.5 MILES LONG AND 0.5 MILES IN WIDTH.
- * INJURIES: NONE
- * FATALITIES: NONE
- * DISCUSSION/DAMAGE: 1 MOBILE HOME DESTROYED WITH THE ROOF BLOWN OFF ANOTHER. SHEDS AND OUTBUILDINGS WITH DAMAGE. SEVERAL HOMES WITH SHINGLE DAMAGE. NUMEROUS TREES DOWN. ROOF OFF A LARGE CHICKEN HOUSE.

